

# Comprehensive Solutions for the Landscape Industry



**WACKER  
NEUSON**  
*all it takes!*



# A complete lineup of equipment to serve every landscape professional.

The range and versatility of Wacker Neuson material handling and general construction equipment means we can offer a solution for any landscaping job – whether you need a small pump and rammer or a wheel loader and a dumper. It starts with product experts who work with you to find the best fit for your needs. A variety of easy-to-use attachments gives you even more options to get the most out of your investment. And in the field, Wacker Neuson serves as a single source for parts, service and warranty support.

## Performance for how you work, no matter what the job requires.

**Landscape Construction:** Trust Wacker Neuson for equipment designed to increase efficiency, saving you time and money and helping you get more landscape projects completed every day.

**Grounds Maintenance:** Wacker Neuson offers compact equipment to complete any task, from wheel loaders to skid steers and telehandlers. And all come with our universal attachment plate, which gives you unprecedented versatility because it works with a wide array of tools, including those you already have in your fleet. Get the most from your investment with this valuable flexibility.

**Specialized Use:** Equipment that delivers stability, versatility and comfort, so you can be more productive when working on cemetery and golf course applications, or performing snow removal. Maneuver through a job site without disturbing the ground or removing objects in the area.





## Our people know what a landscape professional needs.

Landscaping covers a broad range of applications, each requiring specific expertise. Because we have people in the field talking to landscape professionals all the time, we understand the demands put on your equipment and your team. Your Wacker Neuson dealer, using years of industry experience with hardscapes, softscapes, site prep and maintenance, can help you select the right Wacker Neuson equipment and provide:

- **One-on-one consultation:** Our Product Solution Specialists will work with you to select the equipment and the options that best apply to your working environment.
- **Warranty, financing and leasing:** Ask about our variety of programs designed to fit your equipment and how you use it.
- **Expert training:** Even highly experienced equipment operators can benefit from the deep knowledge base of the expert product and service trainers at the Wacker Neuson Technical Academy.



# A full lineup of tools for all the ways landscapers work.

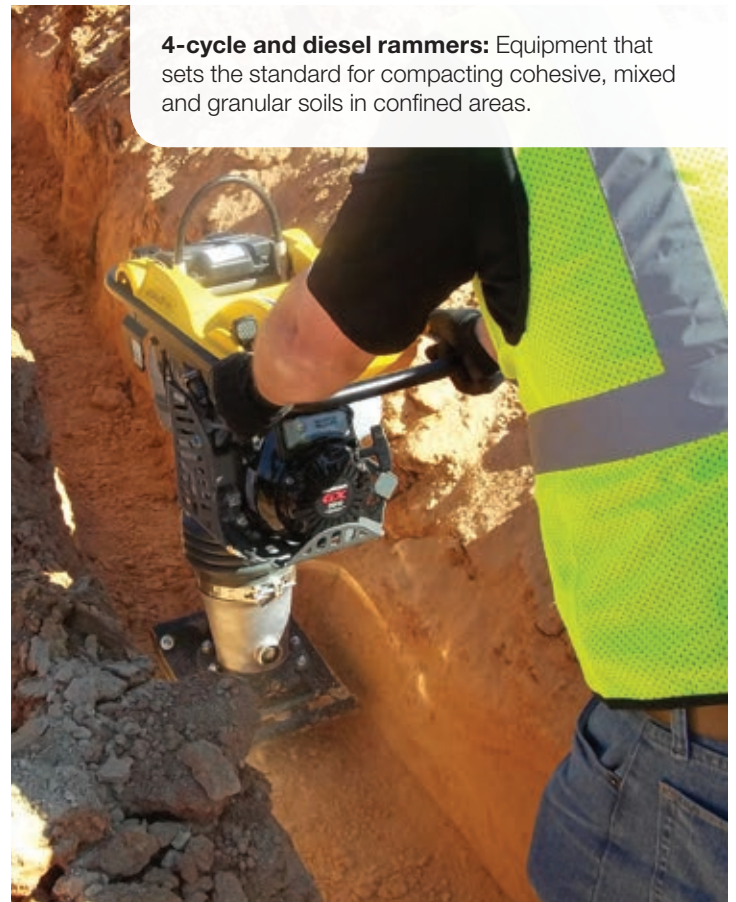
We can provide all the equipment a landscape professional needs, from pumps to rammers, rollers and compactors. Wacker Neuson's wide range of light equipment, along with our service and warranty coverage, represents durable value that performs in any number of landscape applications.



**Plate compactor:** The most extensive and most trusted plate lines in the industry. Easy to maneuver and ideal for hardscapes and large areas.



**2-cycle rammers:** The only machine of its type on the market, our 2-cycle engine meets all EPA emission requirements.



**4-cycle and diesel rammers:** Equipment that sets the standard for compacting cohesive, mixed and granular soils in confined areas.

## What our customers say ...

*"We used a Wacker Neuson walk-behind plate to compact the crusher fines on a base of #2 stone for a 1,000-foot handicap-accessible path. The forward speed and maneuverability of the machine allowed us to provide a solid foundation and keep the job moving along before winter set in."*

Drew Shuster, seasonal land steward, Schlitz Audubon Nature Center



**Vibratory rollers:** Easy to maneuver and allow flush compaction to curbs and obstructions. They also run quieter than competitive machines.



**Submersible pumps:** Single- and three-phase models promote efficient job site water removal. Our heavy-duty submersible pumps can also remove solids up to 0.3 inches thick.



**Cutoff saw:** Our 14-inch cutoff saw is durable and robust, with a balanced design that makes it easy and intuitive to operate.

# Smarter design helps maximize productivity.

Wacker Neuson machines offer versatility that can help you in countless grounds maintenance applications, including turf installation and nursery work. And you get even more from your machine with the unmatched simplicity of our universal attachment plate. Whatever your landscaping specialty, Wacker Neuson has the equipment to do the job.

## Articulated Telescopic Wheel Loader:

With lift heights 15 to 20 inches greater than larger, more expensive machines, it saves money, increases efficiency and offers more flexibility.



**Telehandlers:** Superior lift capability allows for fast and efficient loading of high-sided trucks, while ground-engaging capabilities help you dig into challenges.



**Wheel dumpers:** Save time and money with versatile off-road material movers that offer front and side dumping capabilities.



## What our customers say ...

*"The universal attachment plate is great. The operator doesn't have to get off the machine or do anything complicated. Simply pull up, engage a switch, change the attachment and drive off. It's very quick and very convenient. That helps us get more turf installed faster."*

Steve Huston, director of distribution and installation,  
Classic Turf, Jacksonville, Florida



**Vertical Digging System:** Unique VDS system compensates for height differences on uneven terrain and quickly sets operator in upright position, increasing productivity.



## Giving you more ways to work.

*"The wheel loader is actually everything we thought it would be and more. Because of its mobility, small footprint and quick attach, we're finding more and more uses for it, like snow removal in very narrow areas."*

Bill Darpino, Senior Manager, Victory Farms LLC

## Equipment that excels on manicured turf, on uneven terrain and in tight areas.

Landscape professionals value stability, versatility and comfort during long days on the job. From landscape nurseries to cemeteries and golf courses, in sunny weather or snow, Wacker Neuson equipment is an invaluable asset to your crew. It offers ergonomic and performance features that include more lift, better reach, faster drive speeds and greater operator visibility.



**All-Wheel Steer Loaders:** Lift heavier payloads with greater stability, while keeping an eye on the terrain from a higher 360-degree-view cockpit.



**Snow removal:** With our universal attachment plate, a wide range of Wacker Neuson equipment offers valuable versatility during winter. Easily connect an attachment to maintain productivity.



## What our customers say ...

*"We like the DW60 because you can see everything around it during operation. It has the camera so you don't have to worry about running things over in front of you. You can pull in forward everywhere with this machine — there's no need to worry about backing up. It just makes everything easier during golf course construction and restoration."*

Jeff Glase, supervisor/secretary-treasurer, Glase Golf Construction



**Articulated Wheel Loaders:** With models narrow enough for sidewalks, these machines offer an infinitely adjustable steering column and panoramic visibility. The standard universal attachment plate accepts a wide variety of tools landscapers rely on.



**Compaction:** Wacker Neuson offers a broad range of rollers and vibratory plate compactors designed for optimum compaction of soil, sand and gravel.



## A trusted source for the light and compact equipment landscape professionals need every day.

From small pumps up to large excavators, the full lineup of Wacker Neuson equipment helps you work more efficiently across all landscape applications and in related businesses. Our commitment to ongoing development of technologies and features not only improves your productivity, it also helps expand your business opportunities year-round. Talk to your Wacker Neuson dealer to help get the right equipment to best serve your unique demands.



## Adding value today and tomorrow.

*"We've really been excited about adding Wacker Neuson to our line and the innovative ideas they come with to solve the issues our customers have. We've had great success so far and are looking forward to it in many years to come."*

Marshall Pugh, partner, Tri County Parts & Equipment, Crossville, Tennessee

## More than machines.

Products are only as good as the service, technical support and training behind them. Wacker Neuson and our network of dealers provide everything you need to keep running at peak performance as seasons and tasks change.

### Parts and Service

As a landscape professional, everything you do is time-sensitive. There are only so many hours of daylight, and Mother Nature doesn't always cooperate. To keep on schedule, you need reliable equipment, and you can't afford to wait for parts or service. That's why all Wacker Neuson parts are available via our U.S. distribution center and are typically shipped within 24 hours of your order. You can count on getting the parts, service, maintenance and support you need, when you need them.

### Technical Training and Support

Whether your team needs industry-focused operation tips, process training, advanced maintenance training or other skills, the Wacker Neuson Technical Academy can create a customized training program. Classes are held at our production facility in Menomonee Falls, Wisconsin, just minutes from Milwaukee. Or we can bring our experts to your operation for specific training needs.



## Ask your Wacker Neuson dealer about our warranty and financing programs.

Giving you the most dependable performance for your money includes backing it up with a generous warranty — often exceeding any other offer available. Ask your dealer about warranty offers specific to the Wacker Neuson equipment technology you need.

**Flexible finance options:** We offer financing and lease programs that help you get the most machine for your money.

- Low down payments
- Zero-percent seasonal payment options
- Cash-back options

**Wacker Neuson — all it takes  
for landscape success.**





# Machines that offer the best way to work.



**WACKER  
NEUSON**  
*all it takes!*

Landscape applications require machines that can adapt to different work environments. Wacker Neuson has a full range of equipment for these jobs, with class-leading features and performance benefits that provide even more flexibility, efficiency and operator comfort.

## Why choose Wacker Neuson?

**Unquestioned quality throughout the lineup:** Wacker Neuson rammers and plate compactors have delivered proven value for decades. This quality and attention to a landscape contractor's needs can be found throughout every piece of compact and light equipment we make.

**Versatile solutions:** No two jobs are the same and each one presents challenges, from commercial properties to golf course maintenance and nursery applications. But, Wacker Neuson's variety of compact and light equipment gives you unique solutions. It's about finding the most efficient way to get the job done right.

To change the landscape of your capabilities, just ask your Wacker Neuson dealer about our broad range of equipment. That's all it takes.



[www.wackerneuson.com](http://www.wackerneuson.com)