



**WACKER
NEUSON**
all it takes!

Loaders

Skid Steer and Compact Track Loaders



Productivity at its best

Wacker Neuson offers a finely tuned product range of skid steers and compact track loaders, designed, engineered and built in North America to handle tough applications.

Our loaders are comfortable to operate and offer optimum performance. The all vertical line-up offers best-in-class hinge pin height for maximum loading and unloading capabilities. The high-visibility cabs are easy to enter and exit, and the conveniently located switches help reduce operator fatigue. Superior service accessibility includes cabs that fully tip forward with the loader arms down, for complete access to all maintenance components. The variable speed cooling fan increases efficiency, improves fuel economy and assists in cold starts.



Wacker Neuson- all it takes!

No matter what challenges you may face, Wacker Neuson has all it takes. We offer customers across the globe a comprehensive range of equipment designed for applications across the construction, landscape, agriculture, industrial and municipal industries. In addition to our skid steers and compact track loaders, our diverse range of products includes concrete technology, compaction equipment, light towers, generators, pumps, heaters, utility track loaders, excavators, wheel loaders, telehandlers and dumpers. Wacker Neuson products are sold, rented and serviced by a quality dealer network near you.



Find a Dealer



wackerneuson.com

Contents

Skid Steer Loaders **4**

SW20, SW21, SW28, SW32

Compact Track Loaders **12**

ST31, ST45, ST50

Technical Data

Specifications **18**

Standard Equipment and Options **19**





Designed for job site efficiency: SW20, SW21, SW28, SW32 Skid Steer Loaders.

	SW20	SW21	SW28	SW32
Horsepower (hp)	56	74	74	100
Operating weight (lbs)	6,437	6,512	8,175	8,629
ROC @ 50% (lbs)	2,000	2,100	2,800	3,200
Bucket hinge pin height (in)	124.0	124.0	134.8	134.8

Compact, durable and powerful:

SW20, SW21, SW28 and SW32 at a glance.

Efficiency

- Vertical path lift arm maximizes lift height and reach at full height
- Optional counterweights increase lifting capacity
- Auto idle saves on fuel and reduces overall job site noise
- High-capacity fuel tank reduces time spent refueling
- Variable speed cooling fan runs, as needed, to help maintain optimal operating temperature

Reliability

- Designed with high quality components to withstand tough applications
- Low total cost of ownership
- Industry standard 2-year/2,000-hour warranty

Maintenance

- Best-in-class service access with forward-tilting cab and spacious engine bay
- Maintenance-and regeneration-free aftertreatment eliminates downtime and cost associated with DPF systems
- Efficient Kohler KDI engine with 4-year/4,000-hour engine warranty provides peace of mind





Comfort

- Control pattern can be selected for user preference
- Expansive door and convenient grab handles for easy entry and exit
- Control sensitivity can be adjusted for operator's comfort level
- Ergonomic design with convenient joystick controls
- Spacious cab with automotive-style HVAC available

Performance

- Superior auxiliary hydraulic horsepower in standard and high-flow boosts attachment performance
- Low-mounted tilt cylinders increase visibility of the attachment
- Two-speed transmission increases travel speed, reducing cycle times
- Auto ride control for smooth ride and less material loss

All vertical, all the time

- Vertical lift provides higher lift and greater reach at full height, which maximizes loading and unloading capabilities for any industry and application. Excellent for use when dumping loads into high-sided trucks.



Versatility and performance: reach higher, lift more.



Auto Ride Control

Ride control hydraulically cushions the lift arm to reduce material spillage and provide a smoother ride. Ride control enables automatically when the loader reaches an adjustable speed threshold and disables when slowing to dig or dump material.



Cushioned Cylinders

Lift cylinders are cushioned, slowing the arms down before they make contact with the boom stops, providing smoother operation. Tilt cylinders are cushioned on bucket roll back to reduce material spillage.



Maintenance Access

Even with the loader arms down, the cab can tip forward to provide unrestricted access to hydraulic pumps and motors. The large rear door and swing up cooling package open to a spacious engine compartment for quick and efficient maintenance.



Torque for All Terrain

A high engine torque provides the power needed for improved pushing power and ground-engaging performance on all kinds of terrain.

Designed for operator comfort: spacious cab and intuitive controls.

Comfort

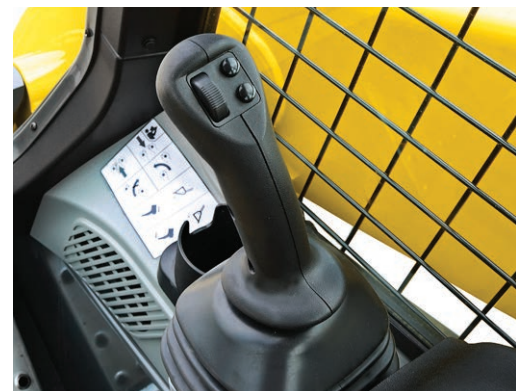
- Ergonomically optimized cab layout
- Spacious, extended cab maximizes room for operator to move inside the cab
- Angled pedals and footbed reduce operator fatigue
- Comfortable seat belt, no restrictive lap bar

Efficiency

- Strategically located switches and intuitive joystick controls
- Large illuminated switches give quick accessibility, regardless of the time of day or whether the operator is wearing gloves
- Foot throttle easily regulates engine speed without moving hands off the joystick, for improved control and efficiency
- Selectable controls meet operator experience and preference

Performance

- The cab forward design moves the operator closer to the attachment for a better vantage point
- Large front door maximizes accessibility for operator to easily enter and exit the machine
- Dual beam work lights are an ideal option for night applications and snow removal



Quality

- Common cab and machine layout across the entire product line means high parts availability
- Optional automotive style HVAC with numerous vents throughout the cab circulates air, keeping the glass clear and the operator comfortable, even in demanding environments



Visibility

A complete view of the job site is achieved with low-mounted tilt cylinders, large door, sloped rear engine compartment and large side windows that maximize operator visibility in every direction. The ability to see both leading and cutting edges ensures the operator is more confident and precise during operation.



5.7-inch Color Display and Rear-view Camera

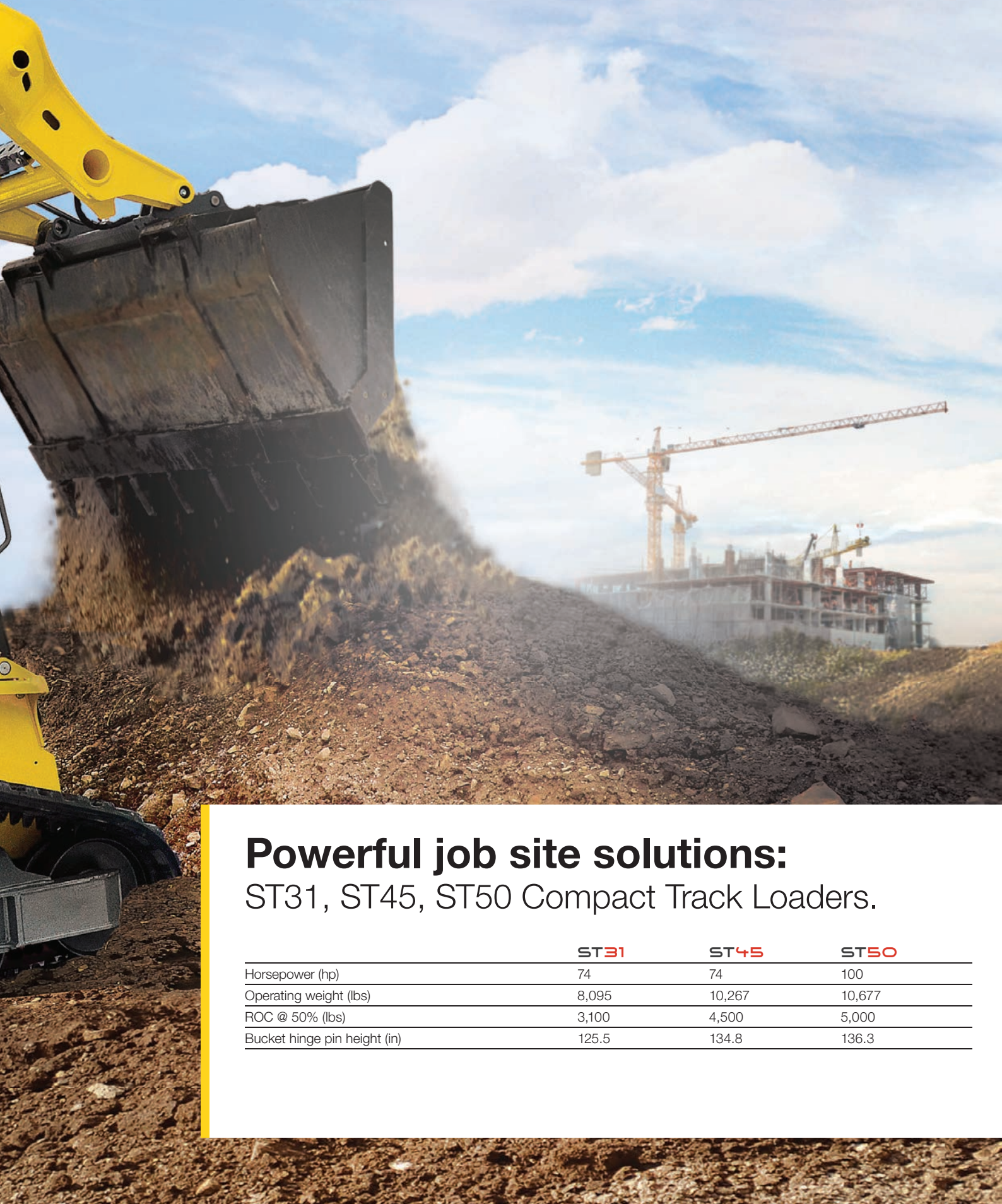
The full-color display allows for customizable machine settings and operating parameters, as well as error codes and maintenance reminders. Combine the display with an optional rear-view camera to enhance visibility and job site awareness.



Controls for Every Operator

Different types of controls ensure operators with different backgrounds and experience can efficiently operate these skid steers and compact track loaders. The control patterns can be toggled between ISO and H-pattern via a switch in the cab. With the adjustable sensitivity, the loaders are designed to fit the control preference of nearly every operator. Joysticks, armrests and seats are all connected and move as one unit, making it more comfortable and easy to operate.





Powerful job site solutions: ST31, ST45, ST50 Compact Track Loaders.

	ST31	ST45	ST50
Horsepower (hp)	74	74	100
Operating weight (lbs)	8,095	10,267	10,677
ROC @ 50% (lbs)	3,100	4,500	5,000
Bucket hinge pin height (in)	125.5	134.8	136.3

Power and torque for tough jobs:

ST31, ST45, and ST50 at a glance.

Efficiency

- Vertical lift path keeps loads closer to the machine improving balance and increasing lift capacity
- Foot throttle easily adjusts engine speed without moving your hands off the joysticks for improved control and efficiency
- Large fuel tank saves time and improves productivity
- Increased lifting capacity with optional counterweights
- A combination of triple-flanged rollers and single-flanged idlers minimize de-tracking and improve ride quality

Reliability

- Heavy-duty rubber tracks provide long life
- Forged steel rollers and idlers ensure longer life and smoother ride

Maintenance

- Simple design and efficient layout reduces daily service checks
- Equipped with a passive aftertreatment solution and exhaust gas recirculation (EGS) that requires no maintenance, reducing total cost of ownership
- Kohler KDI engines are backed by a 4-year/4,000-hour engine warranty
- Open undercarriage concept minimizes build up of dirt, saving time at the end of the day





Comfort

- Grab handles and large door for easy entry and exit
- Different controls can be matched to operator background and experience, to operate the machine effectively
- Joystick controls for intuitive and comfortable operation
- Automotive HVAC available in extended cab

Performance

- High engine torque and drive motor technology provide maximum pushing power
- Cushioned cylinders reduce material spillage
- Auto ride control reduces operator fatigue and material loss

Power and performance

- Powered by a turbocharged Kohler diesel engine, these performance-driven track loaders have all it takes for ground engaging and material handling on all kinds of terrain.





HP High Flow

Switchable auxiliary hydraulic pressure between 3,500 and 4,000 psi boosts attachment performance. The HP High Flow option is available on the SW32 and ST50 and offers improved performance for hydraulic attachments such as mulching heads, brush cutters and cold planers.



Hydraulic Universal Attachment Plate

The hydraulic universal attachment plate (optional on all machines) allows the operator to quickly and easily install and remove attachments without leaving the cab.

Tracks and Undercarriage

- **Heavy-duty Tracks**
Heavy-duty tracks reinforced with high strength, endless steel bands, last longer, reducing the total cost of ownership
- **Wide Tracks (option)**
High-floatation tracks enable these loaders to work where rubber tire machines can't
- **Open Undercarriage Design**
Easy-clean undercarriage shortens end-of-day cleanout and reduces wear due to dirt buildup
- **Elevated Sprocket Design**
Elevated sprockets shed mud and debris as you work, reducing wear
- **Forged Steel Rollers and Idlers**
Triple-flanged, forged steel rollers and single-flange steel idlers minimize de-tracking, improve ride, extend track life and are more durable than rubber coated rollers
- **Simple Maintenance**
When it's time to adjust track tension, all it takes is a common grease gun, as idlers and rollers are permanently sealed and lubricated
- **Embedded Steel**
Tough steel braces guide and support the track when engaging the drive sprocket

Technical Data

	Unit	SW20	SW21	SW28	SW32	ST31	ST45	ST50
Operating weight	lb (kg)	6,437 (2,920)	6,512 (2,954)	8,175 (3,708)	8,629 (3,914)	8,095 (3,672)	10,267 (4,657)	10,677 (4,843)
Lift arm type		Vertical	Vertical	Vertical	Vertical	Vertical	Vertical	Vertical
ROC 35% / 50% (no counterweight)	lb (kg)	— / 2,000 (907)	— / 2,100 (953)	— / 2,800 (1,270)	— / 3,200 (1,451)	2,170 (984) / 3,100 (1,406)	3,150 (1,429) / 4,500 (2,041)	3,500 (1,588) / 5,000 (2,268)
Engine make/model		Kohler KDI 1903 with DOC liquid-cooled, 3-cylinder turbo diesel engine	Kohler KDI 2504 with DOC liquid-cooled, 4-cylinder turbo diesel engine	Kohler KDI 3404 with DOC liquid-cooled, 4-cylinder turbo diesel engine	Kohler KDI 3404TCR-SCR liquid-cooled, 4-cylinder turbo diesel engine	Kohler KDI 2504 with DOC liquid-cooled, 4-cylinder turbo diesel engine	Kohler KDI 3404 with DOC liquid-cooled, 4-cylinder turbo diesel engine	Kohler KDI 3404TCR-SCR liquid-cooled, 4-cylinder turbo diesel engine
Engine displacement	in³ (l)	116 (1.9)	151.5 (2.5)	207 (3.4)	207 (3.4)	151.5 (2.5)	207 (3.4)	207 (3.4)
Engine gross power	hp (kw)	56.3 (42.0)	74.3 (55.4)	74.3 (55.4)	100.6 (75.0)	74.3 (55.4)	74.3 (55.4)	100.6 (75.0)
Fuel capacity	gal (l)	30.1 (114.0)	30.1 (114.0)	40.0 (151.4)	40.0 (151.4)	30.1 (114.0)	50.0 (189.3)	50.0 (189.3)
Auxiliary flow standard/high flow	gal (l)/min	20 (75.7) / —	20 (75.7) / 30 (113.6)	22.1 (83.7) / 31.7 (120)	25.1 (95) / 37.4 (141.5)	20 (75.7) / 30 (113.6)	22.1 (83.7) / 31.7 (120)	25.1 (95) / 37.4 (141.5)
Auxiliary relief pressure / HP high flow	psi (bar)	3,500 (241)	3,500 (241)	3,500 (241)	3,500 (241) / 4,000 (275)	3,500 (241)	3,500 (241)	3,500 (241) / 4,000 (275)
Tire/track size standard / optional	in (mm)	10 x 16.5 / 12 x 16.5	10 x 16.5 / 12 x 16.5	12 x 16.5 / 14 x 17.5	12 x 16.5 / 14 x 17.5	12.6 (320) / 15.7 (400)	17.7 (450) / —	17.7 (450) / —
Ground pressure	psi (kPa)	—	—	—	—	5.6 (38.6)	4.6 (31.6)	4.6 (31.6)
Travel speed (standard tires) low/high	mph (kph)	7.2 (11.6) / 11.6 (18.7)	7.2 (11.6) / 11.6 (18.7)	7.2 (11.6) / 11.9 (19.2)	7.3 (11.7) / 12.2 (19.6)	7.0 (11.3) / 9.5 (15.3)	6.4 (10.3) / 9.6 (15.4)	6.2 (10.0) / 9.9 (15.9)
Breakout force lift arm/bucket	lbf (N)	5,000 (22,200) / 5,300 (23,600)	5,000 (22,200) / 5,300 (23,600)	8,200 (36,500) / 6,950 (30,900)	9,371 (41,700) / 9,461 (42,100)	5,000 (22,200) / 5,300 (23,600)	8,200 (36,500) / 6,950 (30,900)	9,371 (41,700) / 9,461 (42,100)
Tractive effort	lbf (N)	7,625 (34,000)	7,625 (34,000)	9,700 (43,200)	9,700 (43,200)	9,875 (43,900)	11,075 (49,300)	12,600 (56,000)

		SW20	SW21	SW28	SW32	ST31	ST45	ST50
Height to top of ROPS	in (mm)	81.5 (2,070)	81.5 (2,070)	83.2 (2,113)	83.2 (2,113)	83.0 (2,108)	83.2 (2,113)	84.7 (2,151)
Overall length standard bucket/ without bucket	in (mm)	134.9 (3,425) / 106.6 (2,708)	134.9 (3,425) / 106.6 (2,708)	145.4 (3,694) / 117.5 (2,985)	145.4 (3,694) / 117.5 (2,985)	136.6 (3,469) / 106.6 (2,752)	145.4 (3,694) / 117.5 (2,985)	145.4 (3,694) / 117.5 (2,985)
Bucket hinge pin max height	in (mm)	124.0 (3,150)	124.0 (3,150)	134.8 (3,425)	134.8 (3,425)	125.5 (3,188)	134.8 (3,425)	136.3 (3,463)
Bucket max dump height (standard bucket)	in (mm)	96.5 (2,450)	96.5 (2,450)	107.8 (2,739)	107.8 (2,739)	97.2 (2,469)	107.8 (2,739)	108.9 (2,765)
Bucket dump angle at max height	Degrees	42	42	44	44	42	44	44
Ground clearance	in (mm)	7.6 (192)	7.6 (192)	9.0 (228)	9.0 (228)	9.1 (230)	9.0 (228)	10.5 (266)
Angle of departure	Degrees	24	24	23	23	30.7	27	31
Overall width (stan- dard tracks/tires)	in (mm)	65.9 (1,675)	65.9 (1,675)	71.9 (1,826)	71.9 (1,826)	67.1 (1,705)	78.0 (1,982)	78.0 (1,982)
Reach at max height	in (mm)	37.9 (964)	37.9 (964)	37.4 (949)	37.4 (949)	39.2 (995)	38.2 (969)	36.6 (930)

Standard Equipment and Options

	SW20	SW21	SW28	SW32	ST31	ST45	ST50
Open canopy w/ side screens	●	●	●	●	●	●	●
Closed cabin w/ HVAC	○	○	○	○	○	○	○
Polycarbonate demolition door	○	○	○	○	○	○	○
Static sliding seat	●	●	—	—	—	—	—
Mechanical suspension seat	○	○	●	●	●	●	●
Air-ride seat (also heated seat available)	○	○	○	○	○	○	●
Mechanical hand-foot controls	●	●	●	—	●	—	—
EH joystick controls - ISO/H-pattern switchable	○	○	○	●	○	●	●
Hydraulic coupler	○	○	○	○	○	○	○
Single speed drive	●	●	—	—	●	—	—
Two speed drive	○	○	●	●	○	●	●
Variable speed cooling fan	○	○	●	●	○	●	●
High flow auxiliary	○	○	○	○	○	○	○
14-Pin attachment control	○	○	○	○	○	○	○
3" monochrome standard display	●	●	●	—	●	—	—
5.7" color display	○	○	○	●	○	●	●
Rearview camera (5.7" Display req'd)	○	○	○	○	○	○	○
170 lbs/340 lbs/510 lbs rear counterweight	○*	○*	○	○	○	○	○
250 lbs front counterweight	—	—	○	○	—	○	○
AM/FM/MP3 bluetooth radio	○	○	○	○	○	○	○
Dual beam worklights	○	○	○	○	○	○	○
Strobe beacon	○	○	○	○	○	○	○
Hazard light package (strobe + 4-way flashers)	○	○	○	○	○	○	○
Ride control	○	○	○	○	○	○	○
One-way bucket leveling	○	○	○	○	○	○	○
Zero-drift hydraulic valve	○	○	○	○	○	○	○
Cyclonic engine pre-cleaner	○	○	○	○	○	○	○
Exhaust scavenging pre-cleaner	—	—	○	○	—	○	○
High capacity fuel tank (50 gal)	—	—	—	—	—	●	●
Block heater	○	○	○	○	○	○	○
Synthetic hydraulic oil	○	○	○	○	○	○	○

● Standard Equipment ○ Optional Equipment — Not available

* Not available for 510lbs Rear Counterweight

Wacker Neuson – all it takes.



Concrete Technology



Compaction Equipment



Light Towers



Generators



Pumps



Heaters



Utility Track Loaders



Skid Steer / Compact Track Loaders



Excavators



Wheel Loaders



Telehandlers



Dumpers



Finance



Warranty



University



EquipCare



Genuine
Spare Parts

